

# State of Vermont - Guest WiFi User Guide

## 1. Turn on Wireless Adapter



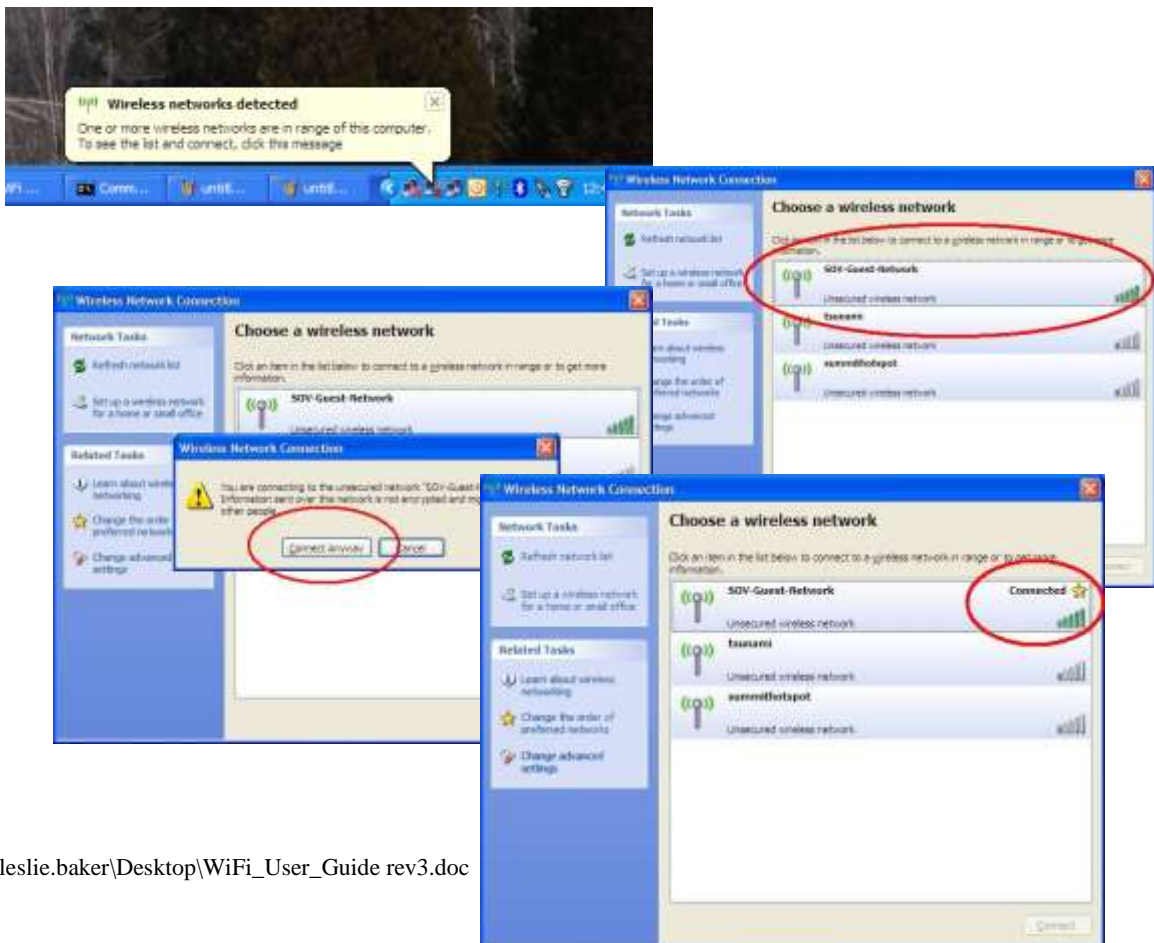
## 2. Choose Wireless Network and Connect to it.

Available guest network SSIDs (names) are as follows. One of these should be available in your area

**Sov-auth-guest-** requires password

**Sov-public-wifi-** no username/password

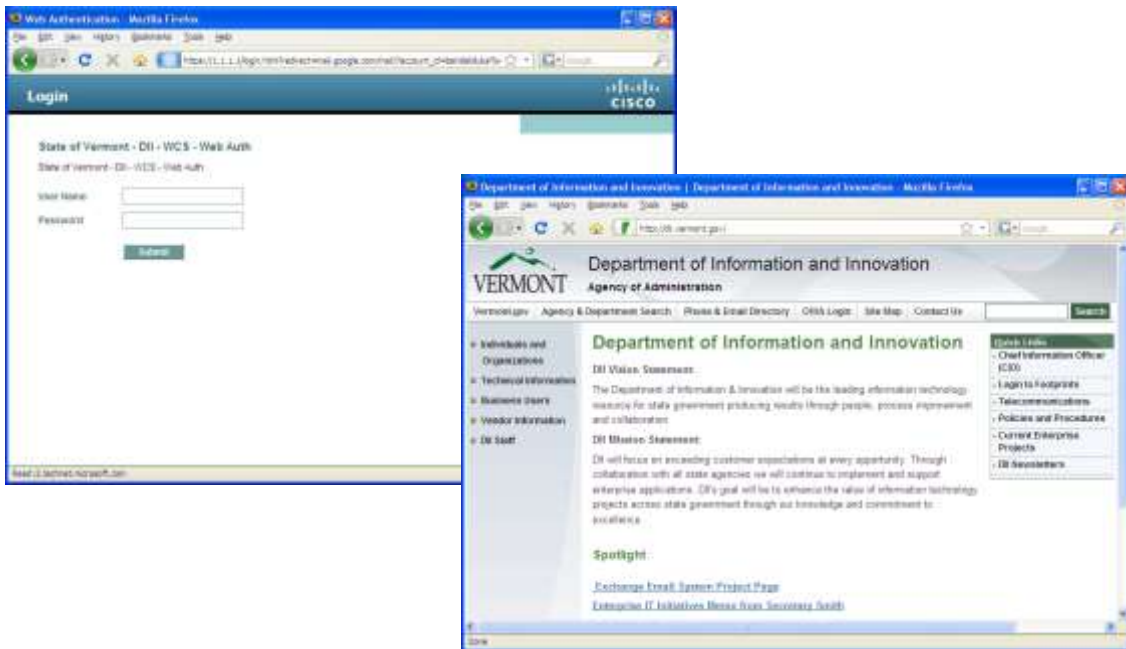
**Sov-auth-wifi** – no username/password



### 3. Launch Web Browser and Login to Network if required

SOV-auth-guest- requires a Web Login

SOV-public-wifi and SOV-auth-wifi is an open guest network that does not require a login



### 4. Surf the Web!!!

