

State of Vermont

Wireless Network Setup Guide for Windows 7 BGS, DII, GMCB, DHR, ACCD, HRC, AGR, PSB and PSD edition



To report an issue please submit a LANDesk ticket or call DII Service Desk: 802-828-6620
or toll free 855-828-6620, Option 1

To setup wireless authentication, users require Network Configuration rights to their workstation. Please contact Desktop Solutions for assistance if you do not have the required rights to complete this setup.

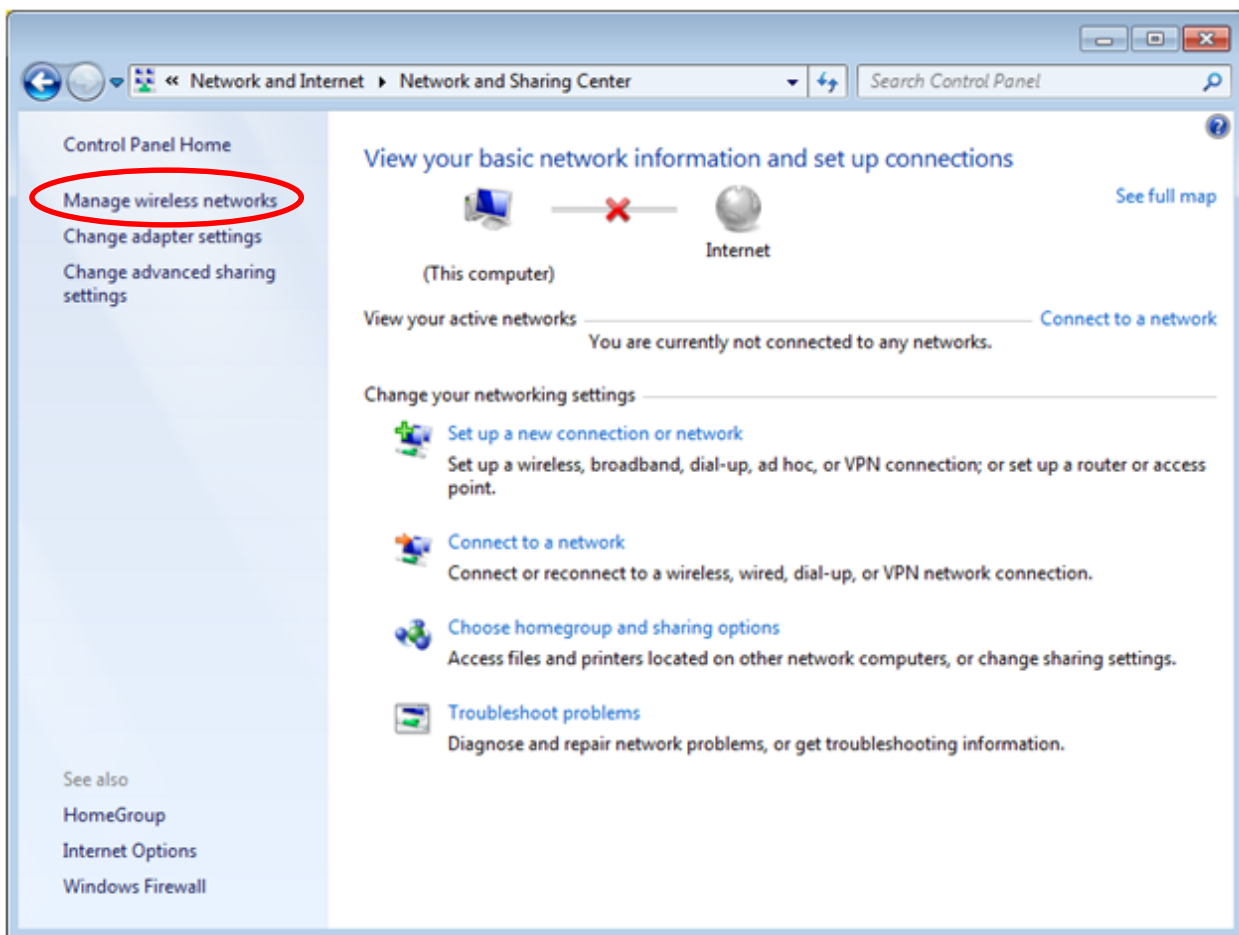
These instructions guide you through adding a wireless network to your workstation. This process is required only during initial setup. Upon completion of this setup a workstation will automatically reconnect and authenticate to the wireless network when within range.

Step 1.

Go to **Start → Control Panel → Network & Sharing Center**

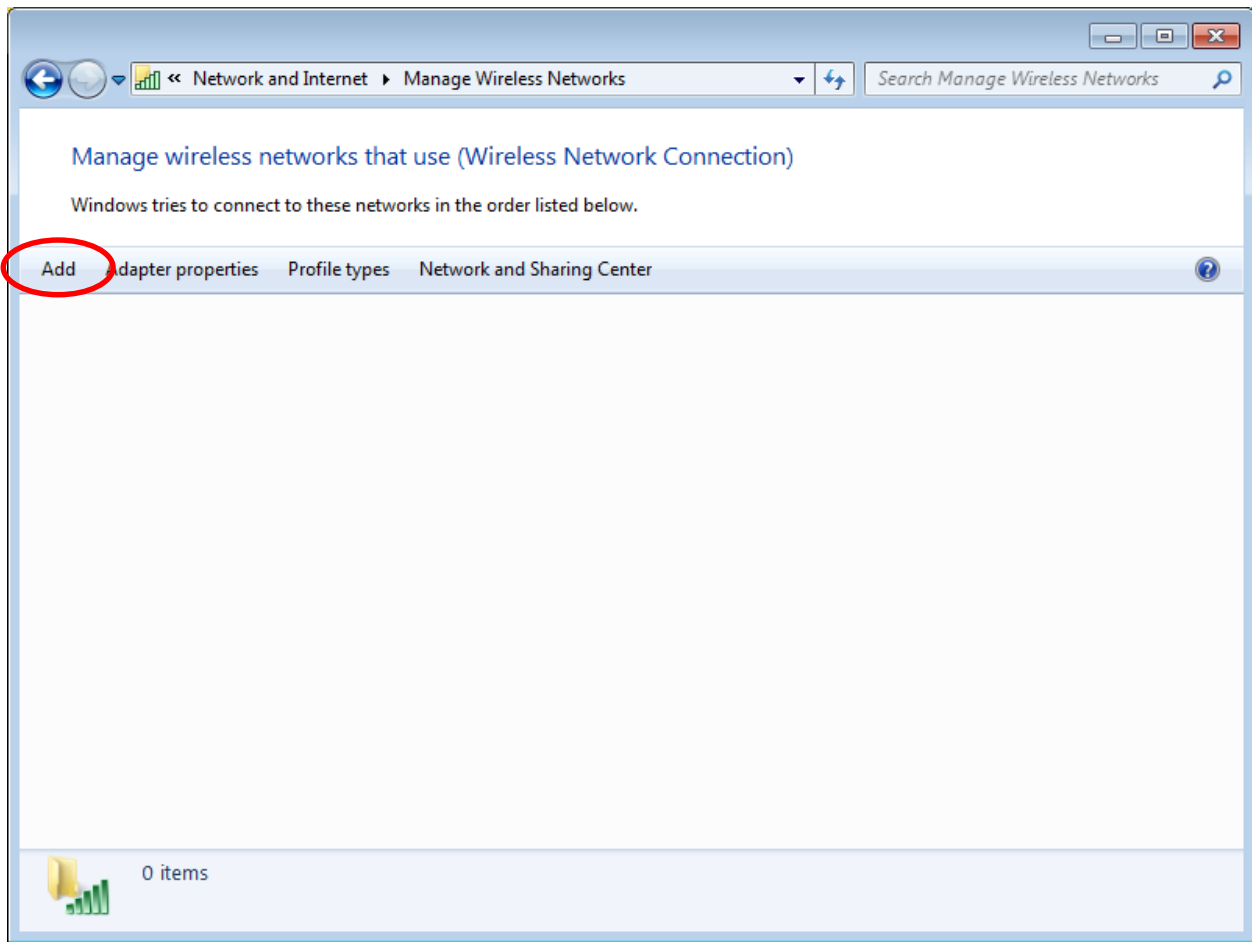
Step 2.

Click **Manage Wireless Networks**.



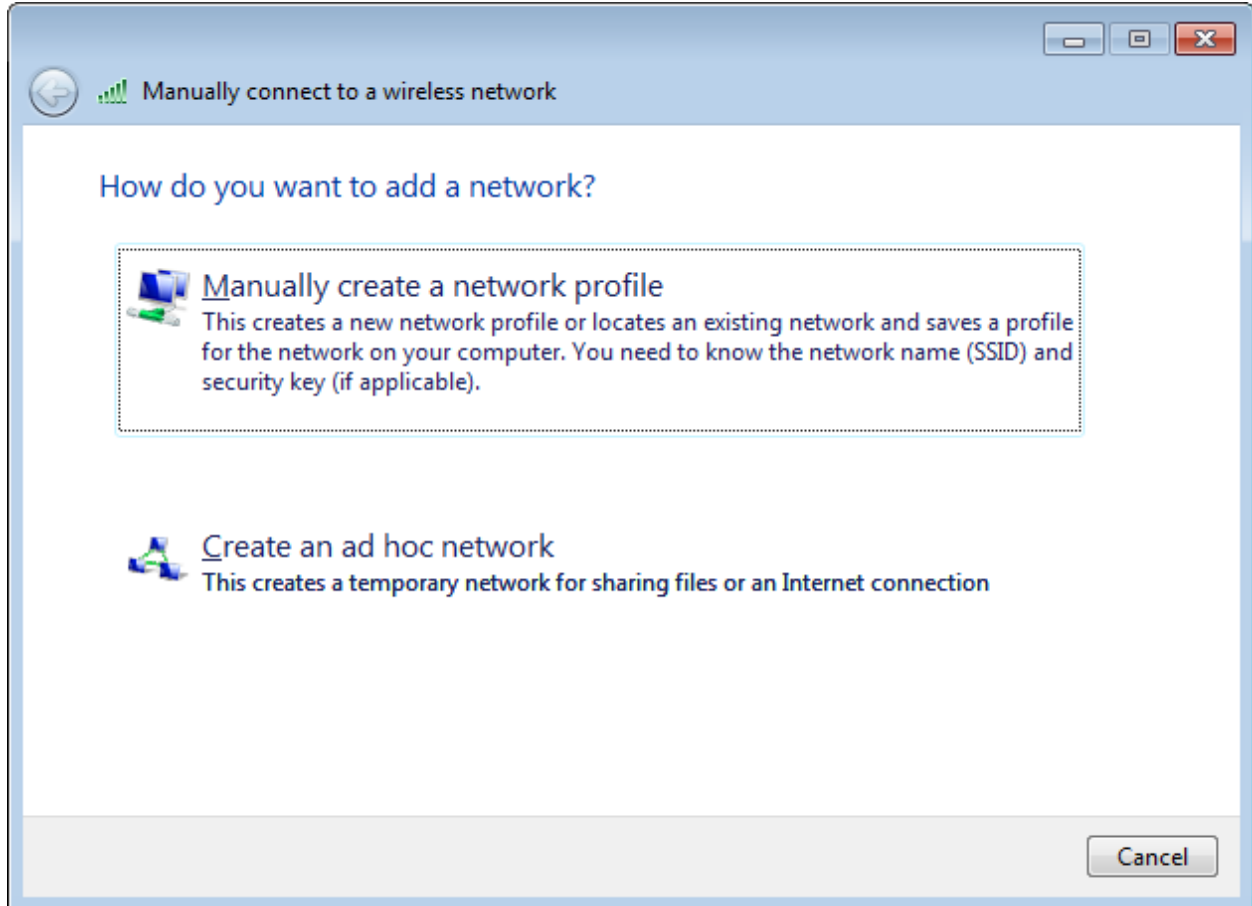
Step 3.

Click **Add**.



Step 4.

Click **Manually create a network profile**.



Step 5.

1. Enter one of the following Network names:

MTPL-NL-DII-Internal

MTPL-116State-AGR

BGS

AOA

DHR

GMCB

PSD

PSB

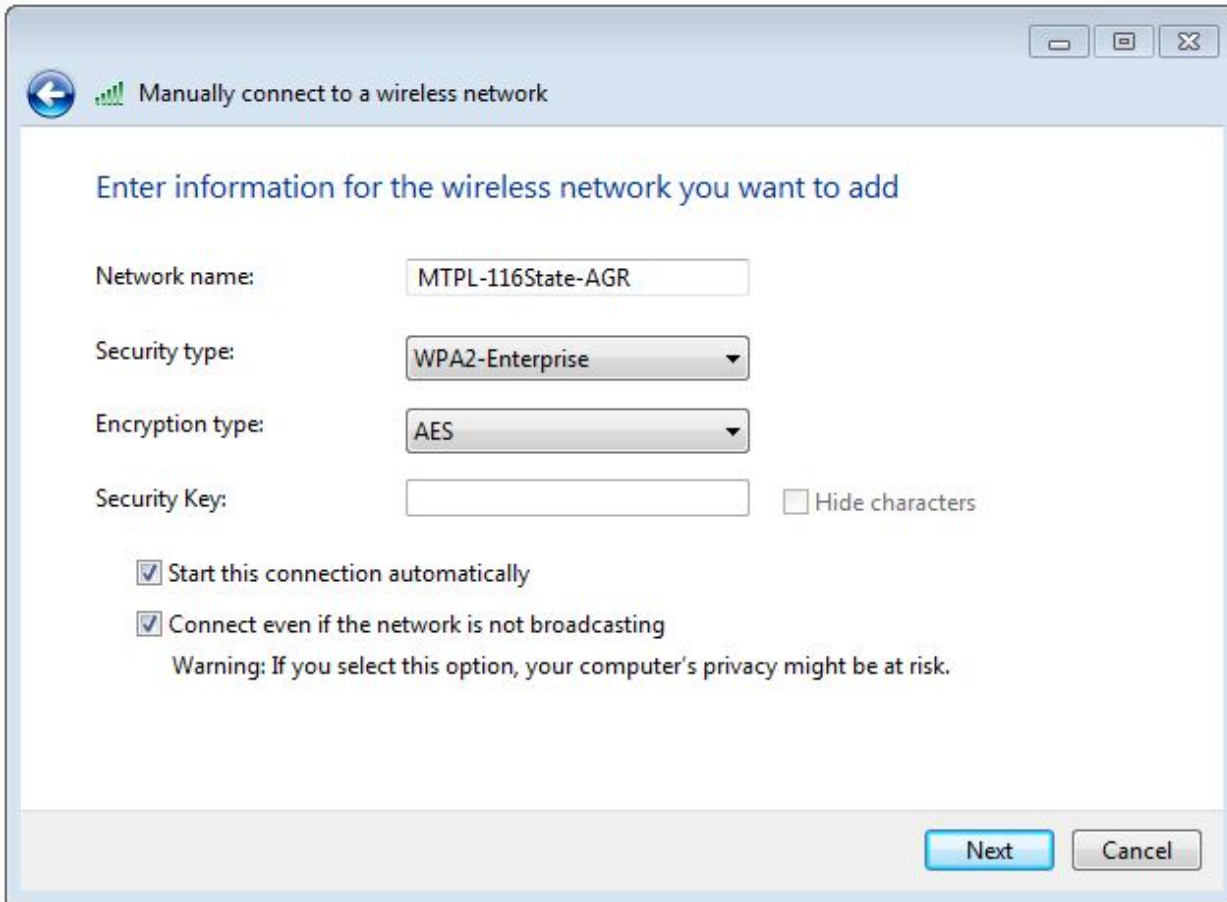
ACCD

HRC

SAS

The network name is case sensitive!

2. Choose **WPA2-Enterprise** as the Security type
3. Check the box labeled **Start this connection automatically.**
4. Check the box labeled **Connect even if the network is not broadcasting.**

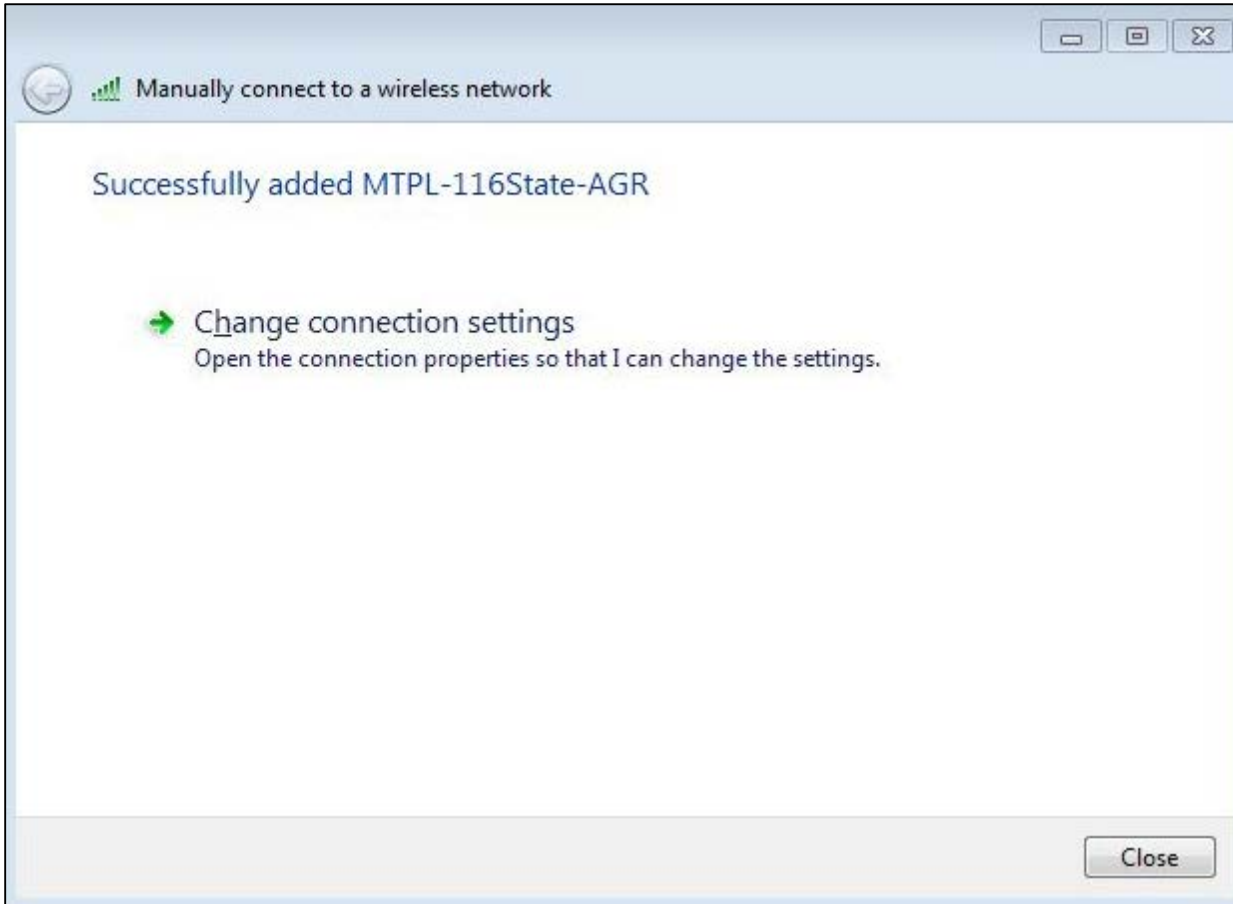


Your screen should look like this, with all options selected to match the screenshot.

5. Click **Next**

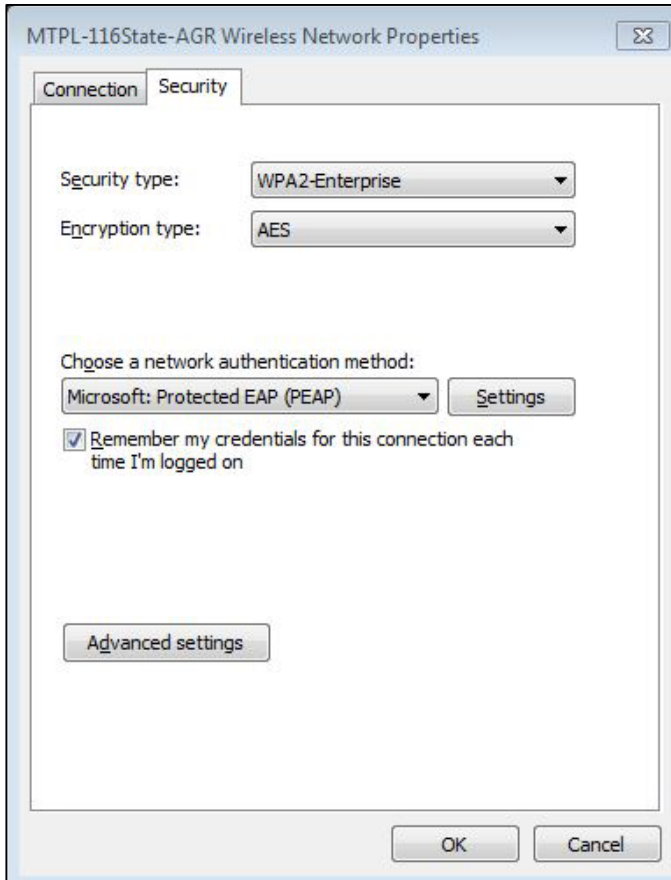
Step 6.

Click **Change connection settings**.

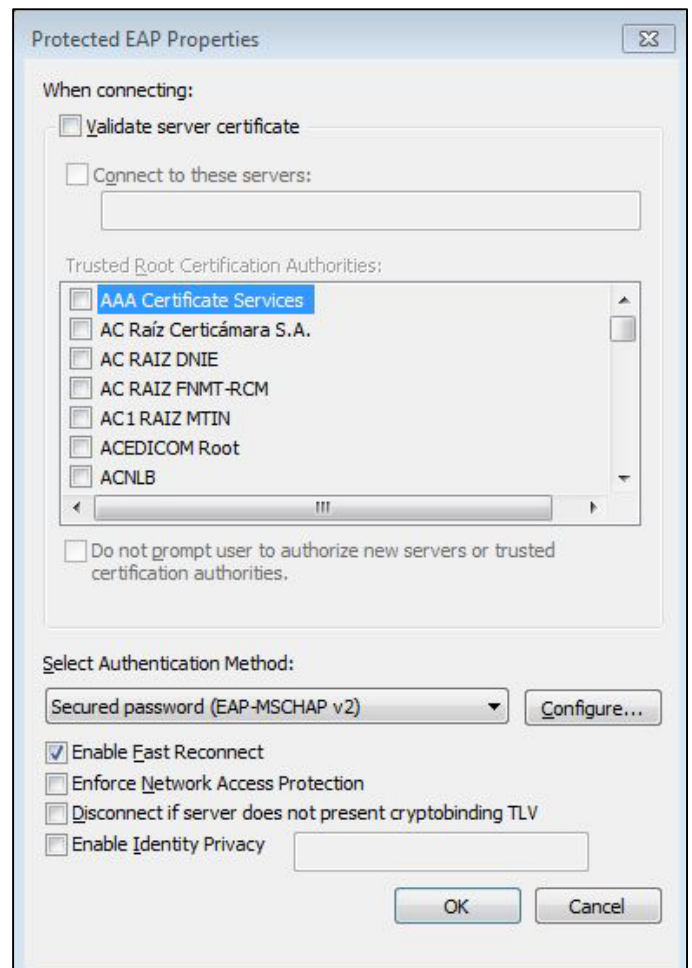


Step 7.

1. Click on the **Security** tab
2. Click on the **Settings** button, next to Microsoft: Protected EAP (PEAP)

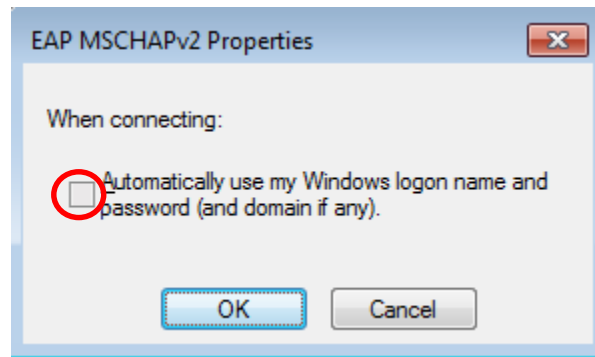


3. **Uncheck** Validate server certificate
4. Click on the **Configure** button next to Secured password (EAP-MSCHAP v2)



Step 8.

1. **Uncheck** Automatically use my Windows logon name and password.
2. **Check** if you prefer to automatically use you Windows Logon credentials

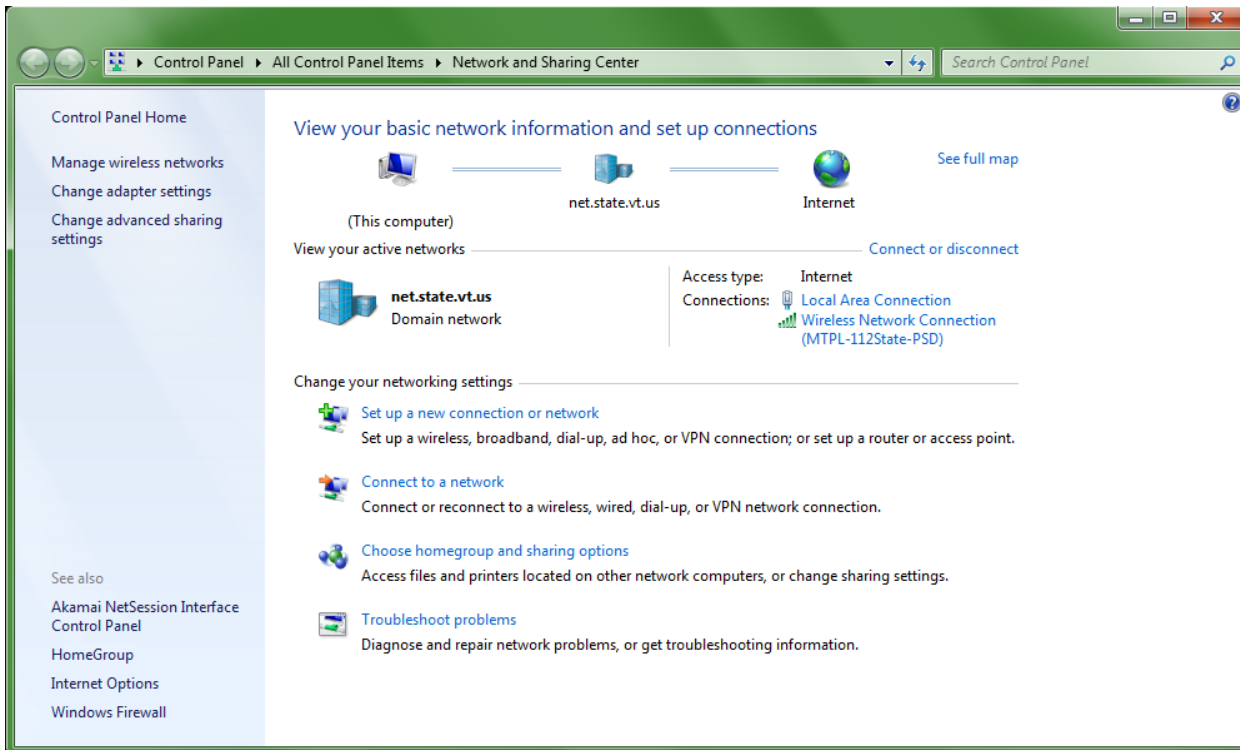


This will ensure that you will get a pop up box to provide domain (VSMS) credentials to connect wirelessly.

3. Click **OK**, to close the “EAP MSCHAPv2 Properties” window.
4. Click **OK**, to close the “MTPL-NL-DII-Internal Wireless Network Properties” window.
5. Click **close**, to close the “Manually connect to wireless network” window

The wireless network has been successfully added. When in range, the wireless network will request domain credentials.

After successfully authenticating you will be able to see if you are connected to the wireless network by going to **Start → Control Panel → Network & Sharing Center**. There you are able to see the signal strength and name of the wireless network you are currently connected to.



Upon completing this setup and successfully authenticating once, you will automatically connect to the wireless network when you have wireless enabled and the network is in range. This connection uses the vsms credentials you provided during your first connection.

If you would prefer to be prompted for your vsms credentials each time you connect to the wireless network return to step seven and uncheck **Remember my credentials for this connection each time I'm logged on**.

If you dock your laptop, you should disable your wireless connection while your laptop is docked. Some laptops do so automatically. Disabling wireless while docked will ensure that your laptop receives an IP address over its wired connection. When you undock your laptop be sure to re-enable wireless.